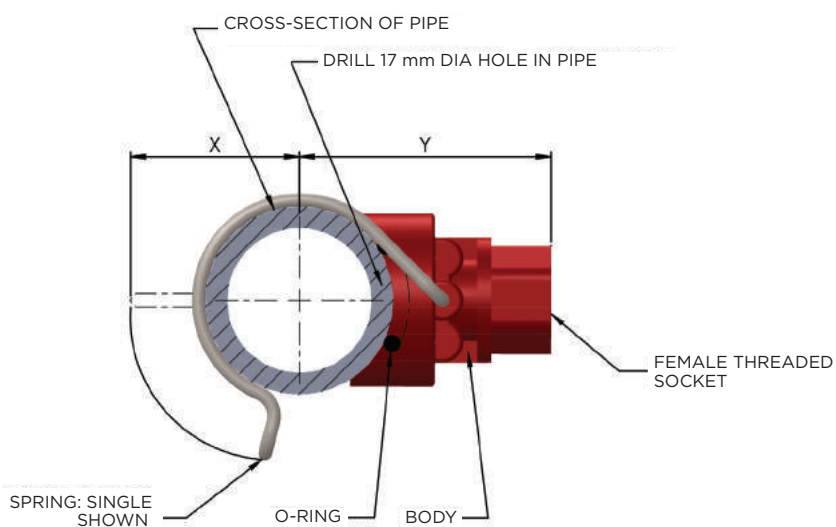


FEATURES

- Inexpensive
- Corrosion resistant
- Impervious to most chemicals
- Good heat resistance
- Injection-molded from custom-blended polypropylene
- Standard with Single Spring Clamp
- Optional Double Spring Clamps for pressures over 4.0 to 10 bar.
- Available with threaded connection in 1/8", 1/4", 3/8" and 1/2" BSPT threads
- Nozzle bodies fit 17 mm diameter holes on the riser

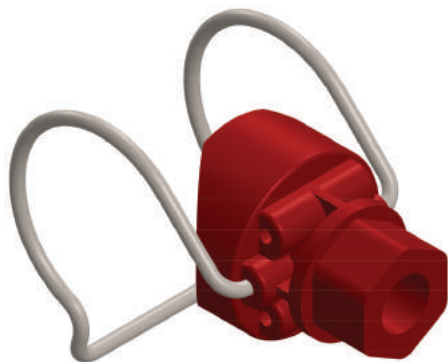
Mark 2 Fixed Nozzle Adapter



MAJOR DIMENSIONS

Pipe size	X	Y	Reg. Spigot 17 mm
1"	43	51	Blue
1-1/4"	48	56	Red
1-1/2"	51	58	Purple
2"	57	64	Green

Also available with Double Springs for pressures from 4 to 10 bar.



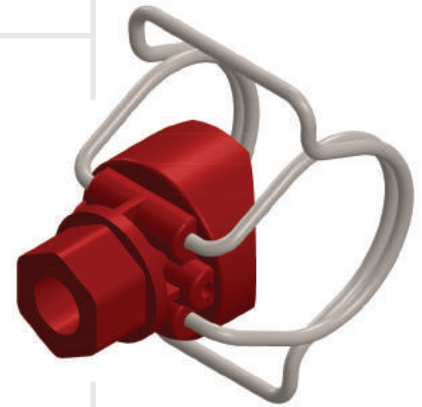
Uni-Spray manufactures all its high-quality spray systems in Canada. These products are available globally and distributed in 65 countries.

Mark 2 Fixed Nozzle Adapter ORDERING INSTRUCTIONS

How to order a Mark 2 Fixed Nozzle Adapter:

The complete Part Number tells us exactly what assembly you want.

For example, let's say that you want to order a Mark 2 Fixed Nozzle Adapter to fit onto a DN32 (1 1/4") pipe, with Double Springs for high pressure, and a 1/4" NPT female threaded connection for use with your standard threaded nozzle tips:



STEP 1

The Part Number begins with UNI, followed by the pipe:

UNI 100 = 1"	-	DN25	-	32/34 mm
UNI 125 = 1-1/4"	-	DN32	-	41/43 mm
UNI 150 = 1-1/2"	-	DN40	-	48/50 mm
UNI 200 = 2"	-	DN50	-	60/63 mm

So in our example, we would have so far

UNI 125

STEP 2

The Thread Sizes are shown as follows:

NPT	BSPT
18 N= 1/8" NPT	18 B= 1/8" BSPT
14 N= 1/4" NPT	14 B= 1/4" BSPT
38 N= 3/8" NPT	38 B= 3/8" BSPT
12 N= 1/2" NPT	12 B= 1/2" BSPT

In our example we now have

UNI 125 14

STEP 3

Add M2 D to denote the Style, where D stands for Double Spring. If you wanted a Single Spring, the Style would be M2 S.

So in our example, we end up with

UNI 125 14 M2 D