

ALX heavy duty

STAINLESS STEEL AISI 304 / ACCIAIO INOX AISI 304

ø 410 mm  
drum/tamburo

optional [page 80-83](#)

**INLET HOSE**



**ALXSG20R**



**P12ARNF**



**P12A80/P12A95**



II 2G/D  
optional

ordering the version indicating the hose reel code preceded by "EX"/  
*ordinare la versione indicando il codice dell'avvolgitubo preceduto da "EX"*



**4R** - Optional 4-rollers hose guide. Ordering the version indicating the hose reel code followed by "4R"  
**4R** - Guida tubo a 4 rulli opzionale. *ordinare la versione indicando il codice dell'avvolgitubo seguito da "4R"*



**EN** Automatic hose reels designed for washing operations with water and detergent at different pressure and temperature conditions. Specific versions with food-quality hose suitable for the passage of water that comes in contact with foodstuffs are also available. The hose-guide support can be mounted in two different positions according to the hose reel installation (pos. A-B). Optional: connection hose, revolving stand, 4-rollers hose guide.

**FR** Enrouleurs automatiques particulièrement adaptés pour opérations de lavage à l'eau et détergents à différentes pressions et températures. Versions avec tuyau de qualité alimentaire indiquées aussi pour le passage d'eau en contact avec les denrées alimentaires. Deux positions possibles

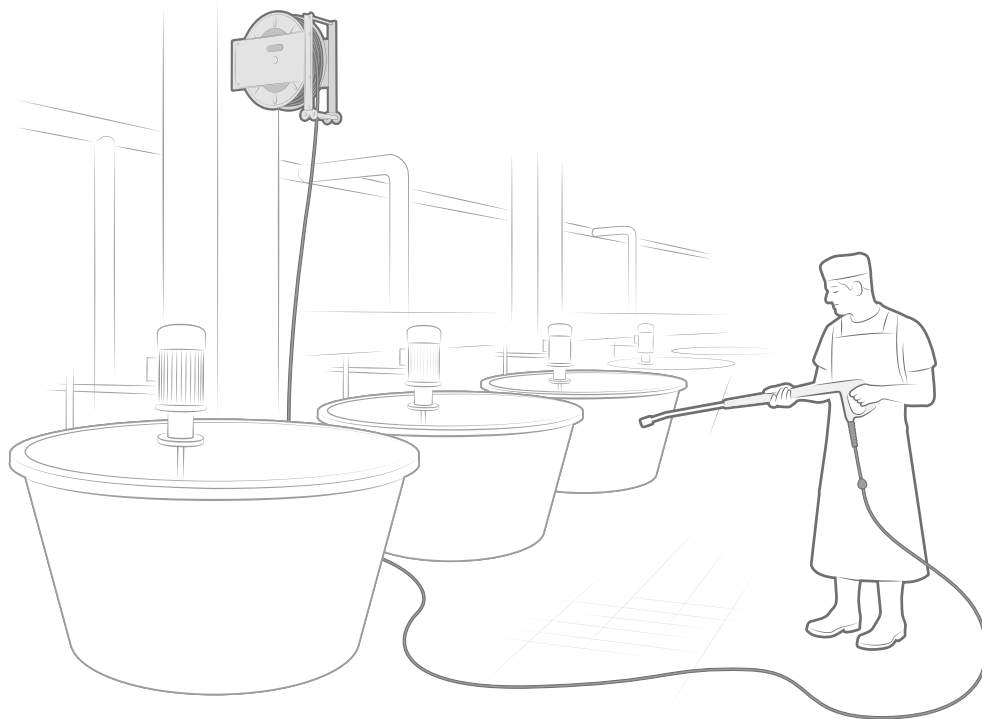
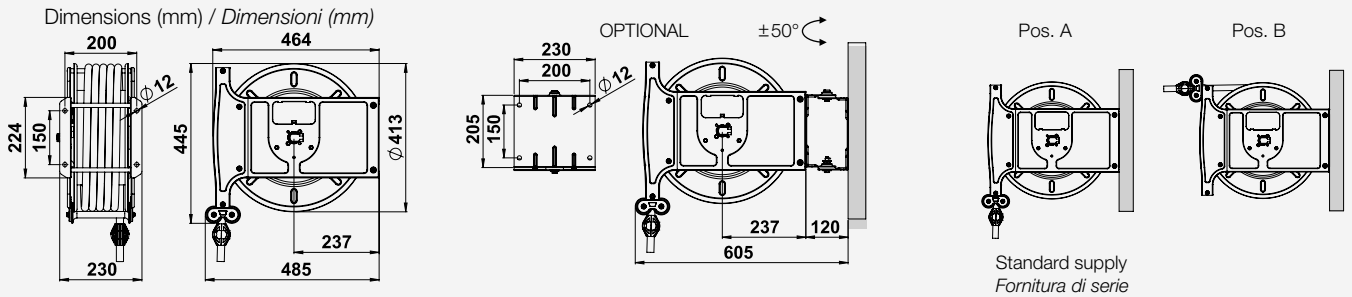
du support guide tuyau pour permettre l'installation désirée (pos. A-B). En option: tuyau de connexion, support pivotant, guide tuyau 4 rouleaux.

**DE** Schlauchaufroller für Waschvorgänge mit Wasser und Reinigungsmittel für versch. Betriebstemperaturen und -drücke, sowie bei lebensmittelechtem Schlauch auch zum Transport von Wasser für den Kontakt mit Lebensmitteln. Schlauchführungshalterung für 2 verschied. Positionen (s.Abb. A-B). Optional: Schlauchführung mit 4 Rollen, Verbindungsschlauch, Schwenkkonsole.

**ES** Enrolladores automáticos ideados especialmente para el lavado con agua y detergentes con diferentes presiones y temperaturas. Versiones con mangueras de

calidad alimentaria idóneos también para el paso de agua por contacto con productos alimenticios. Soporte guía manguera aplicable en dos diversas posiciones para permitir la instalación deseada (pos. A-B). Opcional: manguera de conexión, soporte giratorio, guía manguera de 4 rodillos.

**IT** Avvolgitubo automatici particolarmente adatti per operazioni di lavaggio con acqua e detersivi a diverse pressioni e temperature. Versioni con tubo di qualità alimentare idonee anche per passaggio di acqua per contatto con i prodotti alimentari. Supporto guidatubo applicabile in due diverse posizioni per consentire l'installazione desiderata (pos. A-B). Optional: tubo di collegamento, supporto girevole, guidatubo a 4 rulli.



Hose reels model ALX without hose / Avvolgitubo modello ALX senza tubo

Fluid Fluido	Max. pressure Pressione max.	Code Codice	Inlet (Bsp) Entrata (Gas)	Outlet (Bsp) Uscita (Gas)	Capacity Capacità	Weight (kg) Peso (kg)	ATEX (optional)
Water/Acqua 100°C	60 bar/870 psi	<b>ALX601220ST</b>	1/2" M	1/2" M	(1/2") 20 m/65 ft (5/8") 15 m/50 ft	20	•
Water/Acqua 150°C	400 bar/5800 psi	<b>ALX4H3820ST</b>	3/8" F	3/8" M	20 m/65 ft	20	•

Hose reels model ALX with hose / Avvolgitubo modello ALX completi di tubo

Fluid Fluido	Pressure - Hose Pressione - Tubo	Code Codice	Inlet (Bsp) Entrata (Gas)	Outlet (Bsp) Uscita (Gas)	Hose diam. Tubo diam.	Hose length Lungh. Tubo	Weight (kg) Peso (kg)	Inlet hose Tubo entrata	ATEX (optional)
Water Acqua 70°C	10 bar/145 psi (70°C) 20 bar/290 psi (25°C) Blue Thermoplastic	<b>ALX101320K</b>	1/2" M	1/2" M	13 x 20	20 m/65 ft	25	TC13005K	
		<b>ALX101615K</b>	1/2" M	1/2" M	16 x 23	15 m/50 ft	25	TC16005K	
Water Acqua 90°C	10 bar/145 psi Blue Rubber/Gomma	<b>ALX101320KR</b>	1/2" M	1/2" M	13 x 21	20 m/65 ft	25	TC1301KR	
		<b>ALX101615KR</b>	1/2" M	1/2" M	16 x 25	15 m/50 ft	25	TC1601KR	
Water Acqua 150°C	250 bar/3625 psi 1SC Hydro blue	<b>ALX2H3820</b>	3/8" F	3/8" M	3/8"	20 m/65 ft	27	TC38005H	
		<b>ALX4H3820</b>	3/8" F	3/8" M	3/8"	20 m/65 ft	28	TC38005H	•
		<b>ALX4H5120</b>	3/8" F	3/8" M	5/16"	20 m/65 ft	27	TC38005H	
		<b>*ALX4H3820X</b>	3/8" F	3/8" F	3/8"	20 m/65 ft	28	not available	

\* Hose with stainless steel fittings / Tubo con raccordi in acciaio inox