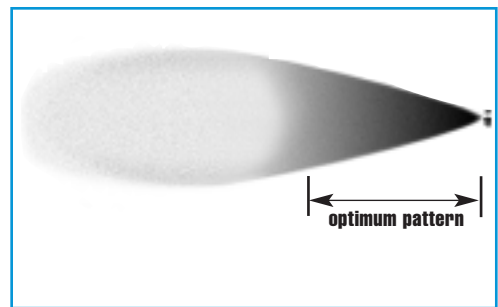


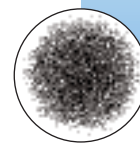
# BEX JPV series round & JPK series flat spray

Siphon/Gravity feed



## APPLICATION AND PERFORMANCE

Set-ups with BEX JPV and JPK series air caps produce round and flat spray patterns respectively. The liquid is gravity or siphon fed into the airstream. Nozzle selection is not limited for other parameters. If you do not find the product for your application, please contact BEX.



spray pattern



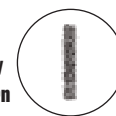
See page 3 for siphon and gravity feed installation.  
See page 12 and 13 for instructions on how to order.

## JPV Round Spray Performance Chart

BEX Set-up No.	Spray Set-up Consists of Liquid and Air Cap Combination	ATOMIZING AIR		LIQUID CAPACITY in GPH								SPRAY DIMENSIONS (at 8" siphon height)		
		Air Press psi	Air Capacity SCFM	Gravity Head			Siphon Height					Optimum Pattern		Max. Spray Range feet
				18"	12"	6"	4"	8"	12"	24"	36"	Spray Angle degrees	Spray Range inches	
JPL1A	Liquid Cap JL1650 + Air Cap JPV20	10	.40	.39	.35	.30	.23	.18	.14	---	---	18	11-14	6-8
		20	.59	.46	.43	.39	.34	.31	.28	.14	---			
		40	.95	.54	.50	.47	.41	.38	.36	.28	.19			
		60	1.32	.59	.54	.49	.44	.41	.39	.31	.24			
JPL1	Liquid Cap JL2050 + Air Cap JPV20	10	.47	.63	.55	.46	.40	.32	.21	---	---	18-19	12-17	7-10
		20	.66	.73	.66	.60	.54	.48	.40	.21	.07			
		40	1.06	.87	.81	.76	.71	.67	.61	.43	.28			
		60	1.48	.98	.92	.88	.83	.79	.73	.57	.40			
JPL2A	Liquid Cap JL2050 + Air Cap JPV40	10	.81	.67	.61	.53	.43	.37	.29	---	---	18-20	12-17	8-13
		20	1.20	.76	.72	.64	.56	.50	.44	.21	---			
		40	1.94	.89	.86	.82	.76	.71	.65	.46	.30			
		60	2.70	.98	.96	.94	.91	.87	.81	.68	.56			
JPL2	Liquid Cap JL2850 + Air Cap JPV40	10	.68	1.19	1.05	.91	.56	.47	.38	---	---	21-22	15-20	10-15
		20	1.03	1.37	1.27	1.13	.88	.77	.68	.46	---			
		40	1.70	1.57	1.47	1.32	1.15	1.05	.91	.63	.28			
		60	2.39	1.48	1.41	1.30	1.08	1.02	.90	.74	.52			
JPL4	Liquid Cap JL60100 + Air Cap JPV60	20	1.90	5.80	5.15	4.20	3.10	2.65	1.90	.60	---	17-19	18-23	12-18
		40	3.00	6.50	5.95	5.10	4.30	3.70	3.00	1.55	.70			
		60	4.10	6.80	6.35	5.60	4.90	4.20	3.45	2.20	1.30			
		80	5.20	6.80	6.40	5.80	5.20	4.50	3.85	2.60	1.60			
JPL5	Liquid Cap JL100150 + Air Cap JPV80	30	5.3	---	---	---	7.2	6.0	4.6	---	---	20-22	20-25	22-27
		40	6.5	---	---	---	7.8	6.8	5.3	---	---			
		60	8.8	---	11.4	10.6	8.3	7.4	6.2	3.2	---			
		80	11.1	11.6	11.0	10.3	8.3	7.5	6.4	4.4	2.2			

(see spray diagram on page 6)

spray pattern



## JPK Flat Spray Performance Chart

BEX Set-up No.	Spray Set-up Consists of Liquid and Air Cap Combination	ATOMIZING AIR		LIQUID CAPACITY in GPH								SPRAY DIMENSIONS (at 8" siphon height)			
		Air Press psi	Air Capacity SCFM	Gravity Head			Siphon Height					Optimum Pattern			Spray Range feet
				18"	12"	6"	4"	8"	12"	24"	36"	6" from tip	9" from tip	15" from tip	
JPLF1	Liquid Cap JL2850 + Air Cap JPK20	10	.99	.35	.33	.30	.27	.25	.22	.17	.13	8-9	10-12	15	6-7
		20	1.42	.31	.30	.29	.26	.25	.23	.19	.16				
		30	1.83	.18	.16	.15	.11	.09	---	---	---				
JPLF2C	Liquid Cap JL35100 + Air Cap JPK40	20	1.86	1.01	.95	.90	.77	.72	.67	.62	.56	9-11	12-15	15-19	9-10
		30	2.42	.88	.84	.81	.75	.71	.67	.63	.57				
		40	2.96	.76	.73	.69	.65	.61	.58	.53	.48				
		60	4.05	.44	.41	.37	.33	.30	.27	---	---				
JPLF3B	Liquid Cap JL40100 + Air Cap JPK60	20	2.26	1.35	1.28	1.20	1.01	.96	.92	.78	.62	7-8	9-10	10-12	10-11
		30	2.88	1.26	1.21	1.14	.92	.87	.82	.74	.59				
		40	3.52	.98	.92	.87	.66	.59	.52	.44	---				
		50	4.13	.58	.52	.44	---	---	---	---	---				
JPLF4B	Liquid Cap JL40100 + Air Cap JPK80	20	2.10	2.01	1.90	1.71	1.47	1.40	1.32	1.17	.92	6-8	8-10	10-13	11
		30	2.70	2.00	1.94	1.81	1.58	1.52	1.45	1.34	1.11				
		40	3.28	1.82	1.74	1.63	1.42	1.34	1.22	1.03	---				
		50	3.87	1.10	.97	.85	.69	---	---	---	---				

--- means not recommended at this pressure

Note: All references to GPH are U.S. gallons per hour